

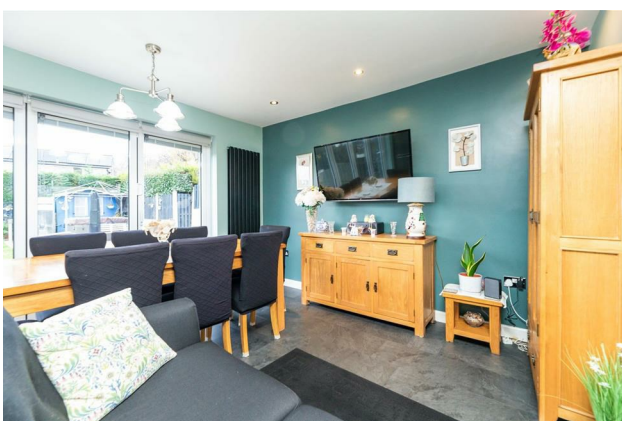
HUNTERS®

HERE TO GET *you* THERE

33 Hesley Grove, Chapeltown, Sheffield, S35 1TX

Guide Price £350,000

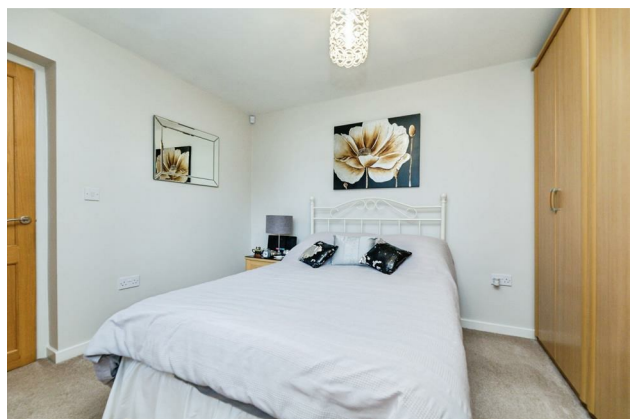
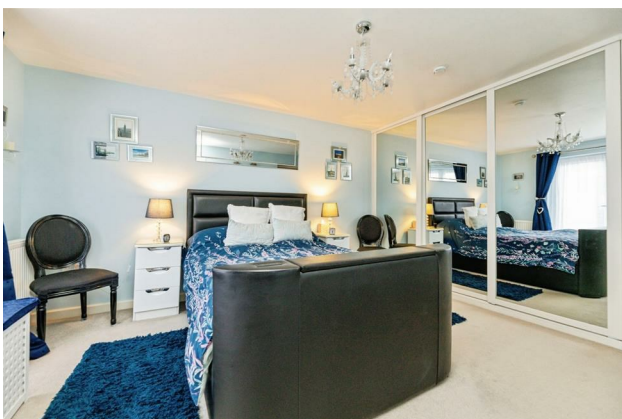
Property Images



HUNTERS[®]

HERE TO GET *you* THERE

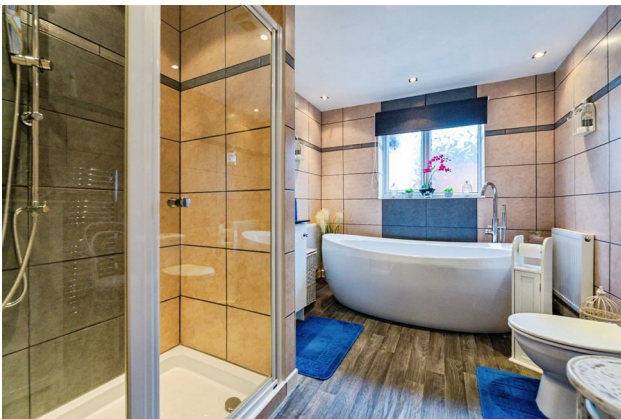
Property Images



HUNTERS[®]

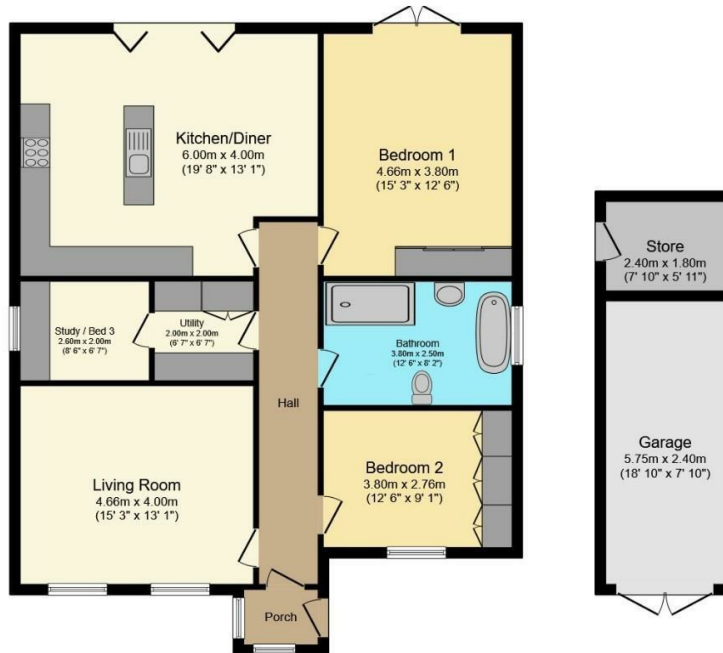
HERE TO GET *you* THERE

Property Images



HUNTERS®

HERE TO GET *you* THERE



Floor Plan
Floor area 108.7 sq.m. (1,170 sq.ft.)

Garage
Floor area 18.5 sq.m. (199 sq.ft.)

Total floor area: 127.2 sq.m. (1,369 sq.ft.)

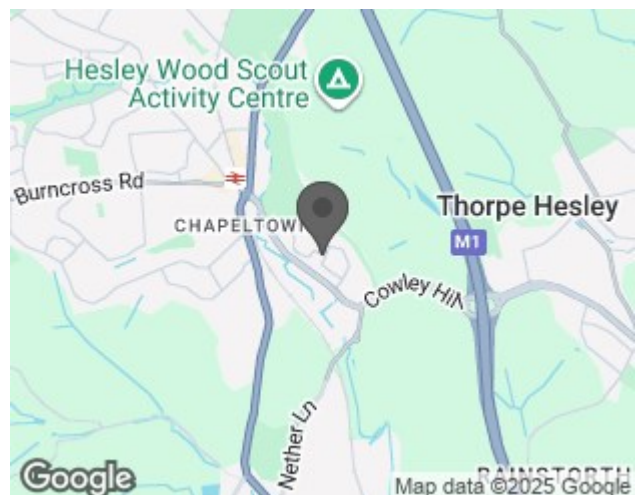
This floor plan is for illustrative purposes only. It is not drawn to scale. Any measurements, floor areas (including any total floor area), openings and orientations are approximate. No details are guaranteed, they cannot be relied upon for any purpose and do not form any part of any agreement. No liability is taken for any error, omission or misstatement. A party must rely upon its own inspection(s). Powered by www.Propertybox.io

HUNTERS®

EPC

Energy Efficiency Rating		
	Current	Potential
Very energy efficient - lower running costs		
(92 plus) A	72	85
(81-91) B		
(69-80) C		
(55-68) D		
(39-54) E		
(21-38) F		
(1-20) G		
Not energy efficient - higher running costs		
England & Wales		EU Directive 2002/91/EC

Map



Details

Type: Bungalow - Detached Beds: 2 Bathrooms: 1 Receptions: 1 Tenure: Freehold

Summary

GUIDE PRICE £350- £375,000 .Nestled in the charming area of Hesley Grove, Chapeltown, Sheffield, this immaculately presented bungalow offers a delightful living experience. With two well-proportioned bedrooms, this property is perfect for those seeking a comfortable and spacious home.

As you step inside, you will be greeted by an inviting open plan kitchen that seamlessly blends with the living area, creating a warm and welcoming atmosphere ideal for both relaxation and entertaining. The spacious layout throughout the bungalow ensures that every corner is utilised effectively, providing ample room for your personal touch.

One of the standout features of this property is the large garden, which offers a wonderful outdoor space for gardening enthusiasts or simply enjoying the fresh air. Whether you wish to host summer barbecues or create a tranquil retreat, this garden is a versatile space that caters to your needs.

Briefly comprising entrance porch, hallway, living room ,stylish open plan kitchen, large master suite ,further double bedroom with fitted wardrobes, contemporary bathroom, utility, office and detached garage.

This bungalow is ready for you to move in without the hassle of renovations or repairs, making it an excellent choice for those looking for a hassle-free transition into their new home. With its appealing features and prime location, this property is sure to attract interest. Don't miss the opportunity to make this lovely bungalow your own.

Features

- 2 BED DETACHED BUNGALOW • SPACIOUS DIMENSIONS THROUGHOUT • OPEN PLAN KITCHEN • MODERN FIXTURES AND FITTINGS • BEAUTIFUL BATHROOM • GARAGE WITH AMPLE OFF ROAD PARKING • LARGE GARDEN • BI-FOLDING DOORS • CLOSE TO AN ARRAY OF AMNEITIES • COUNCIL TAX C